




FOR CONTINUATION REFER LPN100202-SK251

H 1:500
0 5 10 20 30 40
@ A1

FILE PATH: D:\LPN100202 - Mullum Creek\Drawings\Drawings\Sketches\LPN100202-SK250.dwg
 BY: BRENT GLEESON
 PLOT DATE: 6/22/2013 2:48 PM

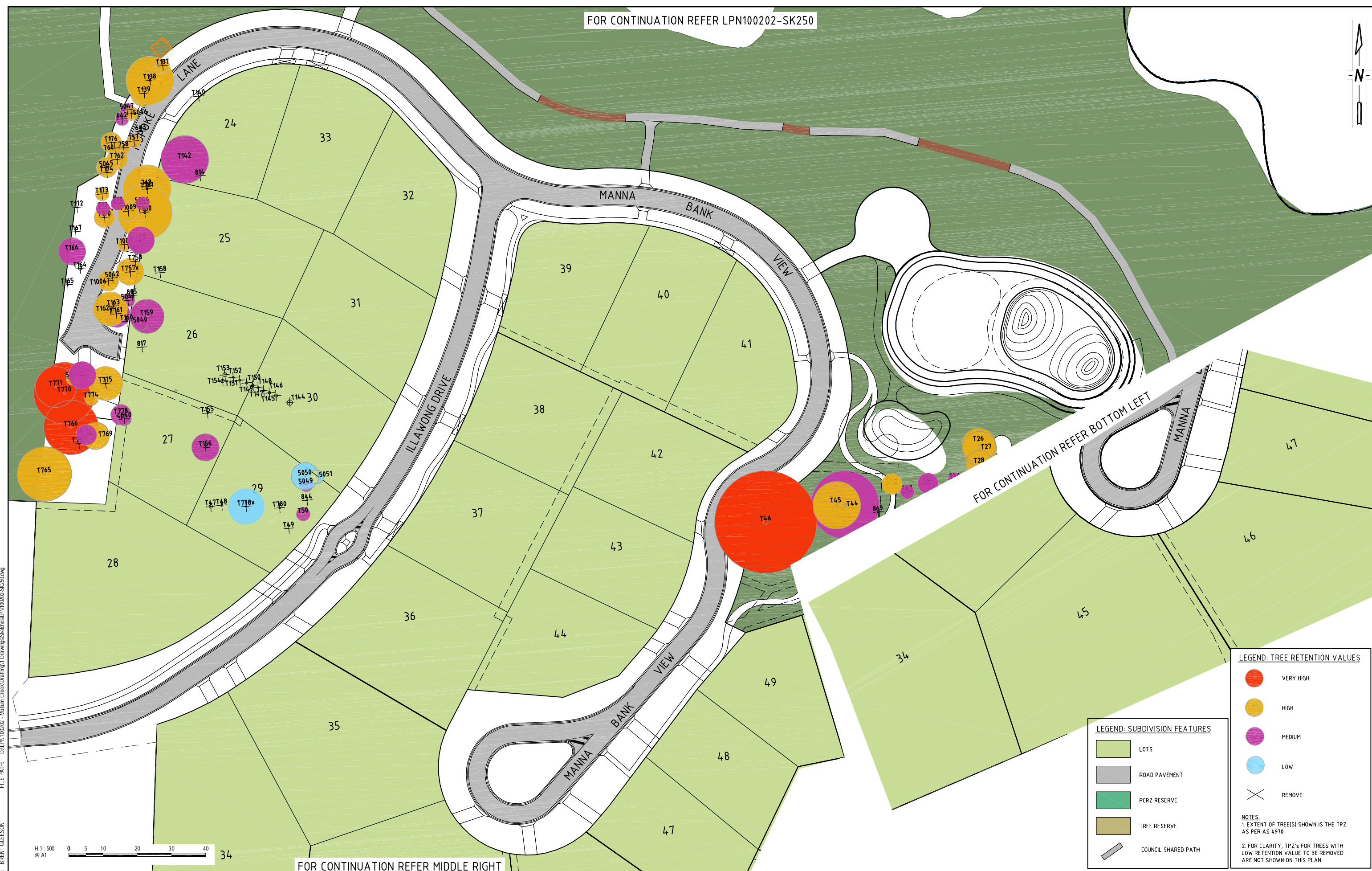
REV	DESCRIPTION	DRAWN	CHECKED	APPROVED	DATE
0	REVISED STATUS OF T1884 & T902 (LOT 16 & 17)	C.G.	B.G.	C.J.S.	26.02.15
M	GENERAL REVISION	C.G.	B.G.	C.J.S.	09.09.14
L	GENERAL REVISION	C.G.	B.G.	C.J.S.	04.09.14
K	GENERAL REVISION	C.G.	B.G.	C.J.S.	12.08.14
J	GENERAL REVISION	C.G.	B.G.	C.J.S.	01.08.14
I	GENERAL REVISION	C.G.	B.G.	C.J.S.	24.06.14


MULLUM CREEK
 DESIGN . ENVIRONMENT . DONVALE
Copyright - This document is the property of Landplan. ©


THE landplan GROUP
 Development Consultants, Engineers & Construction Managers
 Unit 3, 25 - 27 Agosta Drive, Laverton North Vic. 3026
 Tel: 61 3 8345 9000 Fax: 61 3 8345 9099
 Email info@landplangroup.com.au - Web www.landplan.com.au
 ABN 81 785 825 232

DRAWN:	C.GLEESON
DESIGNED:	C.J.SANTOS
APPROVED:	B.GLEESON
DATE:	AUGUST 2013

COUNCIL:	MANNINGHAM CITY COUNCIL	CLIENT:	VERVE PROJECTS PTY LTD
PROJECT:	112-126 OLD WARRANDYTE ROAD DONVALE	TITLE:	TREE RETENTION AND REMOVAL PLAN SHEET 1 OF 3
ISSUE:	CONSTRUCTION	SCALE:	
PROJECT No:	LPN100202	DWG No:	SK250
REVISION:			O



FOR CONTINUATION REFER MIDDLE RIGHT

FOR CONTINUATION REFER BOTTOM LEFT



LEGEND: TREE RETENTION VALUES

- VERY HIGH
- HIGH
- MEDIUM
- LOW
- ✕ REMOVE

LEGEND: SUBDIVISION FEATURES


- LOTS
- ROAD PAVEMENT
- PCRZ RESERVE
- TREE RESERVE
- COUNCIL SHARED PATH

NOTES:

- EXTENT OF TREE(S) SHOWN IS THE TPZ AS PER AS 4970.
- FOR CLARITY, TPZ's FOR TREES WITH LOW RETENTION VALUE TO BE REMOVED ARE NOT SHOWN ON THIS PLAN.

FILE PATH: D:\LPN100202 - Mullum Creek\Drafting\Drawings\Sketches\LPN100202-SK250.dwg
 BY: BRENT GLEESON
 PLOT DATE: 6/22/2013 2:49 PM

REV	DESCRIPTION	DRAWN	CHECKED	APPROVED	DATE
P	REVISED STATUS OF T156 (LOT 27)	C.G.	B.G.	C.J.S.	26.02.15
O	REVISED STATUS OF T778 & T4040	C.G.	B.G.	C.J.S.	13.02.14
N	GENERAL REVISION	C.G.	B.G.	C.J.S.	09.09.14
M	GENERAL REVISION	C.G.	B.G.	C.J.S.	04.09.14
L	GENERAL REVISION	C.G.	B.G.	C.J.S.	12.08.14
K	GENERAL REVISION	C.G.	B.G.	C.J.S.	01.08.14


MULLUM CREEK
 DESIGN . ENVIRONMENT . DONVALE
Copyright - This document is the property of Landplan. ©

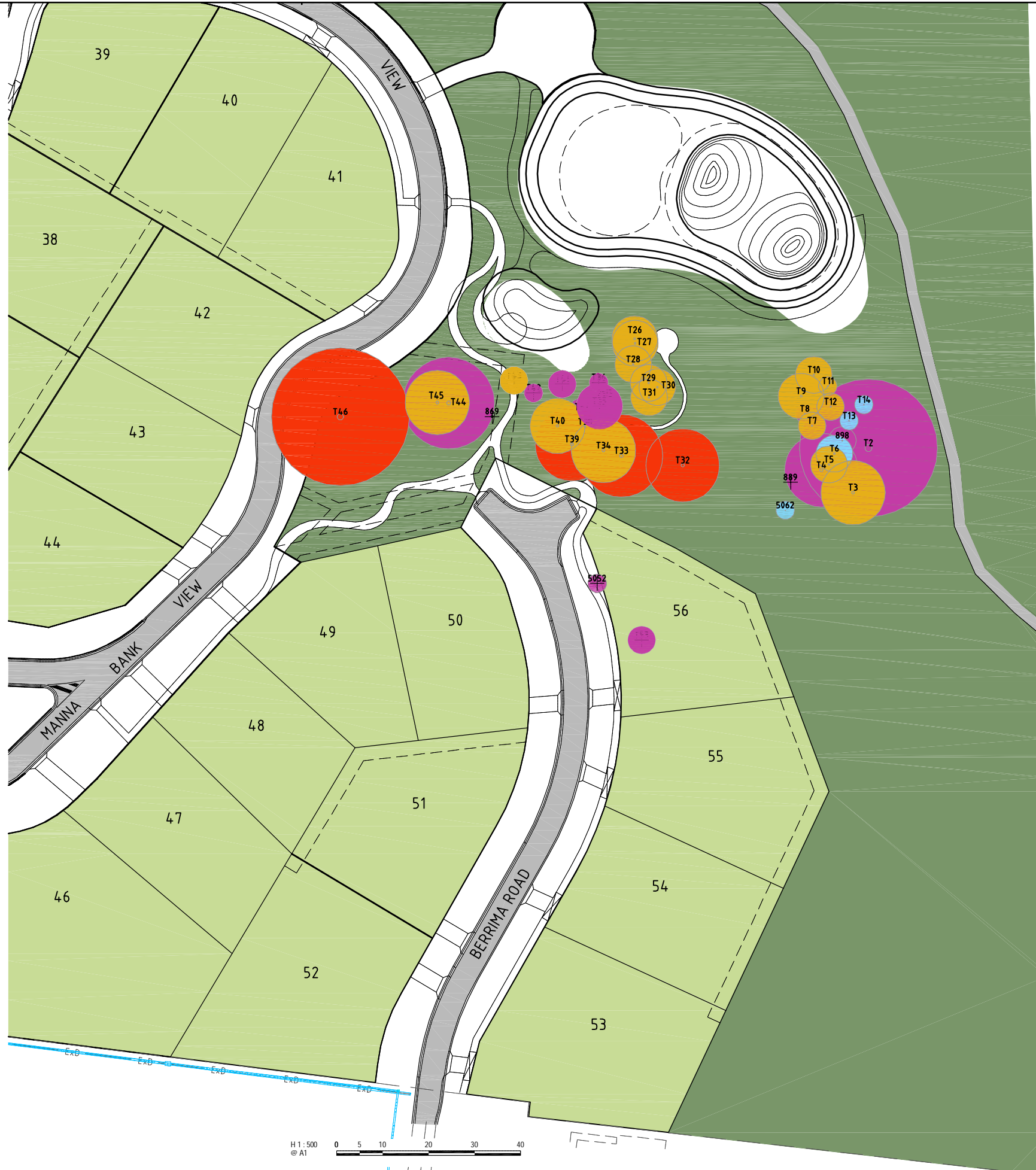

THE landplan GROUP
 Development Consultants, Engineers & Construction Managers
 Unit 3, 25 - 27 Agostia Drive, Laverton North Vic 3026
 Tel: 61 3 8345 9000 Fax: 61 3 8345 9099
 Email info@landplangroup.com.au - Web www.landplan.com.au
 ABN 81 785 825 232

DRAWN:	C.GLEESON
DESIGNED:	C.J.SANTOS
APPROVED:	B.GLEESON
DATE:	AUGUST 2013

COUNCIL:	MANNINGHAM CITY COUNCIL	CLIENT:	VERVE PROJECTS PTY LTD
PROJECT:	112-126 OLD WARRANDYTE ROAD DONVALE	TITLE:	TREE RETENTION AND REMOVAL PLAN 2 OF 3
ISSUE:	CONSTRUCTION	SCALE:	
PROJECT No:	LPN100202	DWG No:	SK251
REVISION:		P	



FOR CONTINUATION REFER LPN100202 - SK251



LEGEND: SUBDIVISION FEATURES

- LOTS
- ROAD PAVEMENT
- PCRZ RESERVE
- TREE RESERVE
- COUNCIL SHARED PATH


LEGEND: TREE RETENTION VALUES

- VERY HIGH
- HIGH
- MEDIUM
- LOW
- REMOVE

NOTES:
 1. EXTENT OF TREE(S) SHOWN IS THE TPZ AS PER AS 4:970.
 2. FOR CLARITY, TPZ'S FOR TREES WITH LOW RETENTION VALUE TO BE REMOVED ARE NOT SHOWN ON THIS PLAN.

PLOT DATE: 6/22/2015 2:49 PM BY: BRENT GLEESON FILE PATH: D:\LPN100202 - Mullum Creek\Drafting1 Drawings\Sketches\LPN100202 SK251.dwg

REV	DESCRIPTION	DRAWN	CHECKED	APPROVED	DATE
M	GENERAL REVISION	C.G.	B.G.	C.J.S.	09.09.14
L	GENERAL REVISION	C.G.	B.G.	C.J.S.	04.09.14
K	GENERAL REVISION	C.G.	B.G.	C.J.S.	12.08.14
J	GENERAL REVISION	C.G.	B.G.	C.J.S.	01.08.14
I	GENERAL REVISION	C.G.	B.G.	C.J.S.	24.06.14
H	GENERAL REVISION	C.G.	B.G.	C.J.S.	20.06.14


MULLUM CREEK
 DESIGN . ENVIRONMENT . DONVALE
Copyright - This document is the property of Landplan. ©


THE landplan GROUP
 Development Consultants, Engineers & Construction Managers
 Unit 3, 25 - 27 Agosta Drive, Laverton North Vic 3026
 Tel : 61 3 8345 9000 Fax: 61 3 8345 9099
 Email info@landplangroup.com.au - Web www.landplan.com.au
 ABN 81 785 825 232

DRAWN:	C.GLEESON
DESIGNED:	C.J.SANTOS
APPROVED:	B.GLEESON
DATE:	AUGUST 2013

COUNCIL:	MANNINGHAM CITY COUNCIL	CLIENT:	VERVE PROJECTS PTY LTD
PROJECT:	112-126 OLD WARRANDYTE ROAD DONVALE	TITLE:	TREE RETENTION AND REMOVAL PLAN SHEET 3 OF 3
ISSUE:	CONSTRUCTION	SCALE:	
PROJECT No:	LPN100202	DWG No:	SK252
REVISION:			M