

Background & Practice Profile

Ryan Strating
Architect & Practice Manager

Dr. Ceridwen Owen
Deputy Head of School and Program Director (Architecture)

At *core collective* we work collaboratively with our clients on projects that value elegant design with ecological and community benefit.

Our practice is engaged with innovative design & construction, architectural education, research and building materials development.

core collective projects vary in scale, type and location: heritage adaptive re-use developments; tourism facilities; and a number of residential projects, including small inner suburban infill housing and single family rural houses to multi-residential and mixed use developments. The majority of our projects are in Tasmania and Victoria - we have also completed projects in Nauru and India.

The practice was established in 2002 with a mandate to carry out pro bono work and engage in ongoing investigation into issues of sustainable construction and development. Our project-based work allows research into the use of recycled and sustainably produced materials and processes and this is buttressed by Ceridwen's UTAS teaching and research position that add a critical perspective to the analysis and intent of our project work.

We recently completed a successful pro bono project in the north west of India for *Tong-Len Charitable Trust*, an independent NGO based in Dharmasala who work with displaced Indian communities in the Kangra Valley to improve the living standard through a range of health and education programs.

Academic and Industry Research

Ceridwen's architectural academic research includes publication and presentation around the issues of Autism and Dementia housing, Ecological design; Eco-tourism; pro-bono engagement, as well as a contributing editor role with the media publication *Architecture Australia*.

Since 2009 Ryan has led a Australian/Scandinavian team to develop *clinka* - a building materials & systems company. The products are based on small units of expanded clay aggregate made using super-efficient Danish technology. Bulk *clinka* is used for underslab structural insulation (*clinkaFILL*); for lightweight concrete aggregate; and as high performance green roof media. *clinka* aggregate is also the main component of masonry units (*clinkaBLOK*) used for low-carbon footings and insulating masonry. Life Cycle Assessment of a *clinka* project for the Tasmanian Government using *eTool* LCA Software has demonstrated how *clinka* products can significantly reduce carbon emissions in the construction and use of high performance buildings.

Contact details

Name	Ryan Strating & Ceridwen Owen
Phone	0411 588 603
Email	info@corecollective.com.au
Website	corecollective.com.au

Registration

Architects Registration Board of Victoria (51174)
Board of Architects Tasmania (669)
Building Practitioner Tasmania (CC4652M)





*Neerim South House
photos: Nick Stephenson*



Blairgowrie House

*Neerim East House
photos: Nick Stephenson*





*Cygnets Shop & Dwelling
photos: Jasmin Latona*



*Venus Bay House
photos: Derek Swalwell*



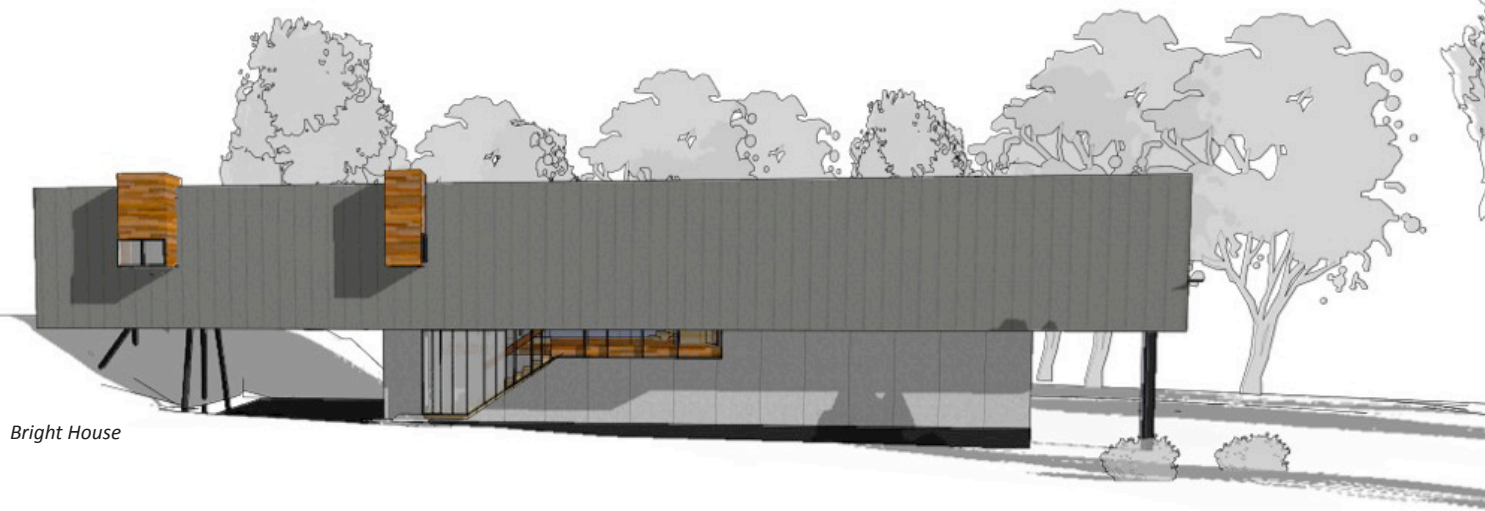


**international -
tong-len hostel india**

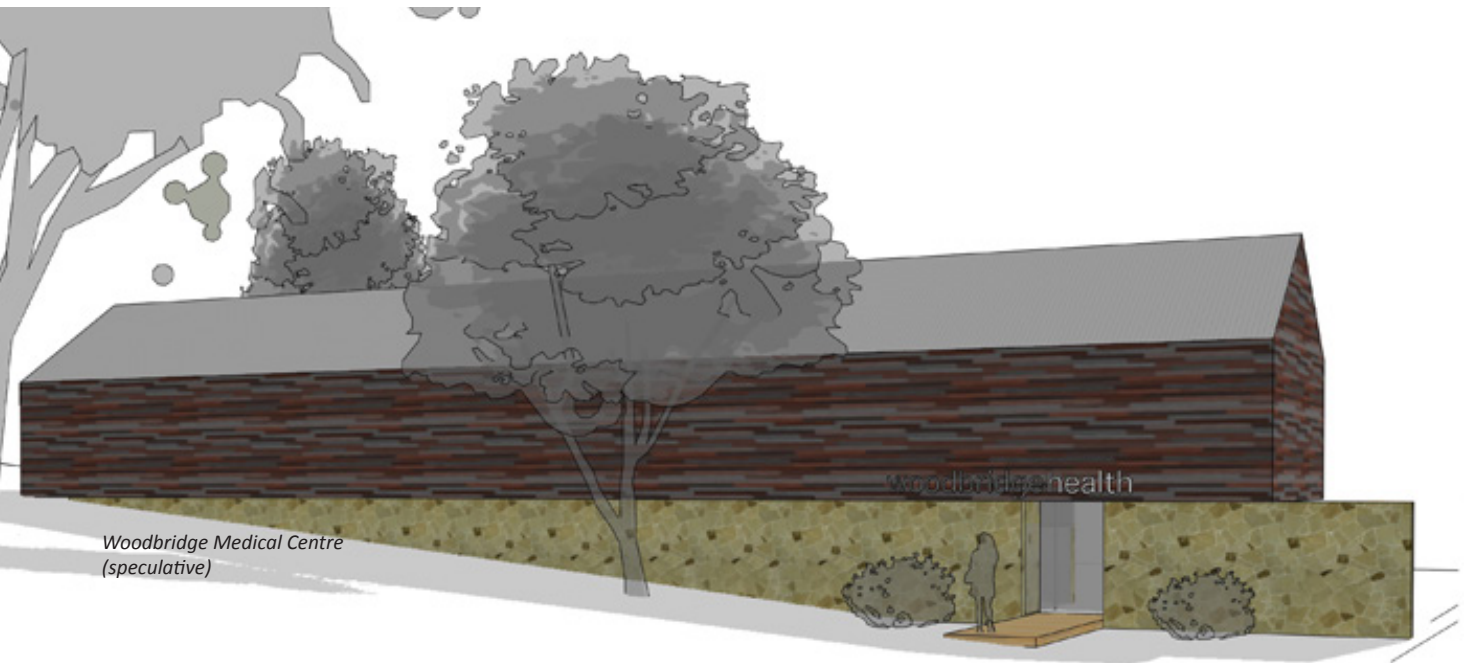
photos: Jordan Davis



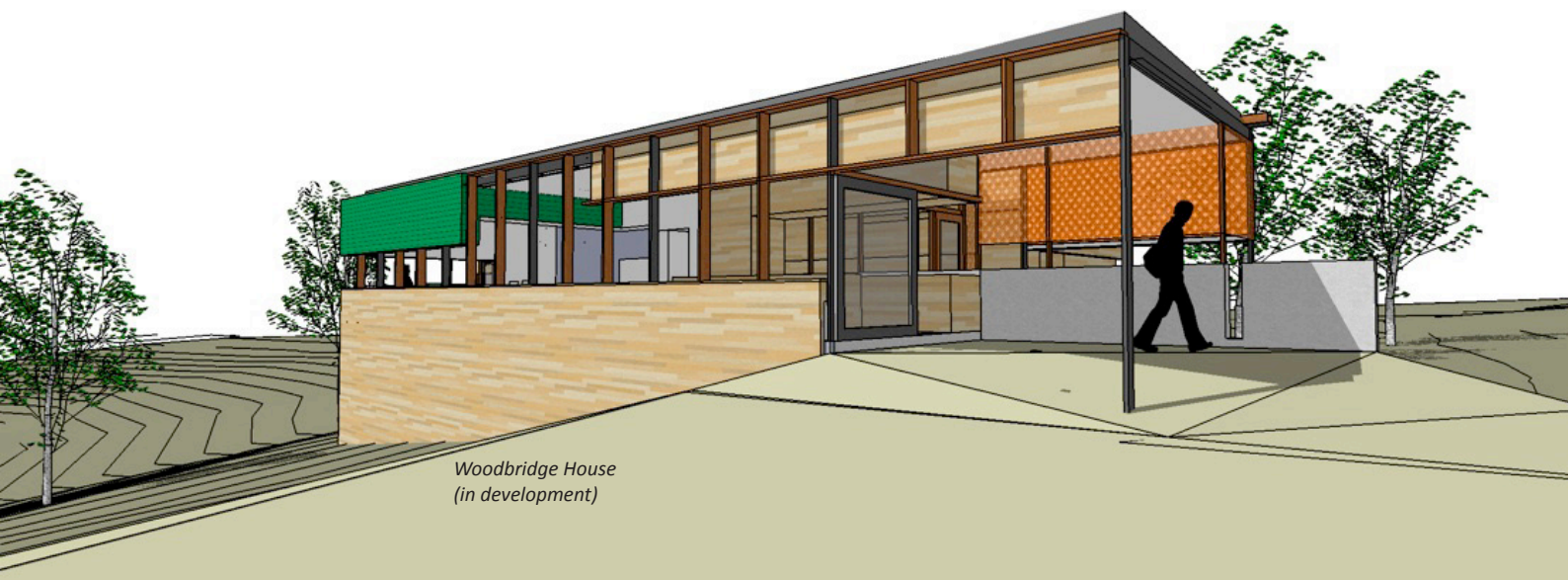
in development/unbuilt



Bright House



Woodbridge Medical Centre
(speculative)



Woodbridge House
(in development)

consulting design architect

Lead Design Architect consulting to Sunpower Design



Fitzroy



Port Fairy



Musk



Birregurra

NEWSFRONT |



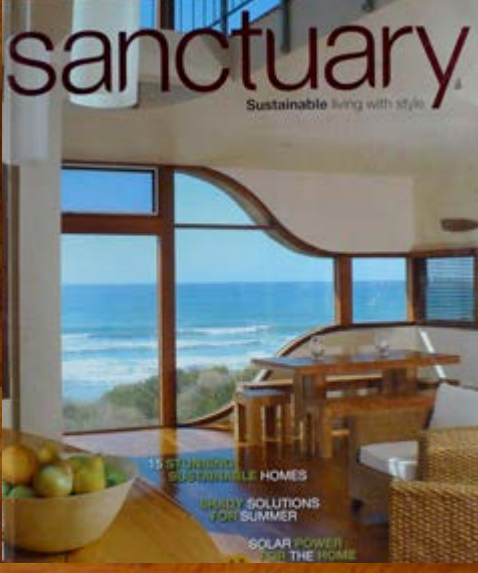
HELPERS: Corviden Owen, Jamyang (Tong Len's head architect), the Dalai Lama, Anna Owen and Ryan Stirling in India.

Architects lend a hand to Indian charity hostel

EMMA HOPE
THEY travelled to India to help build a hostel for monks and nuns. The architects, Corviden Owen and Jamyang, were joined by the Dalai Lama, Anna Owen and Ryan Stirling in India.



MODERN: Tong Len's Dalai Hostel.



15 STUNNING SUSTAINABLE HOMES
DIY SOLUTIONS FOR SUMMER
SOLAR POWER FOR THE HOME

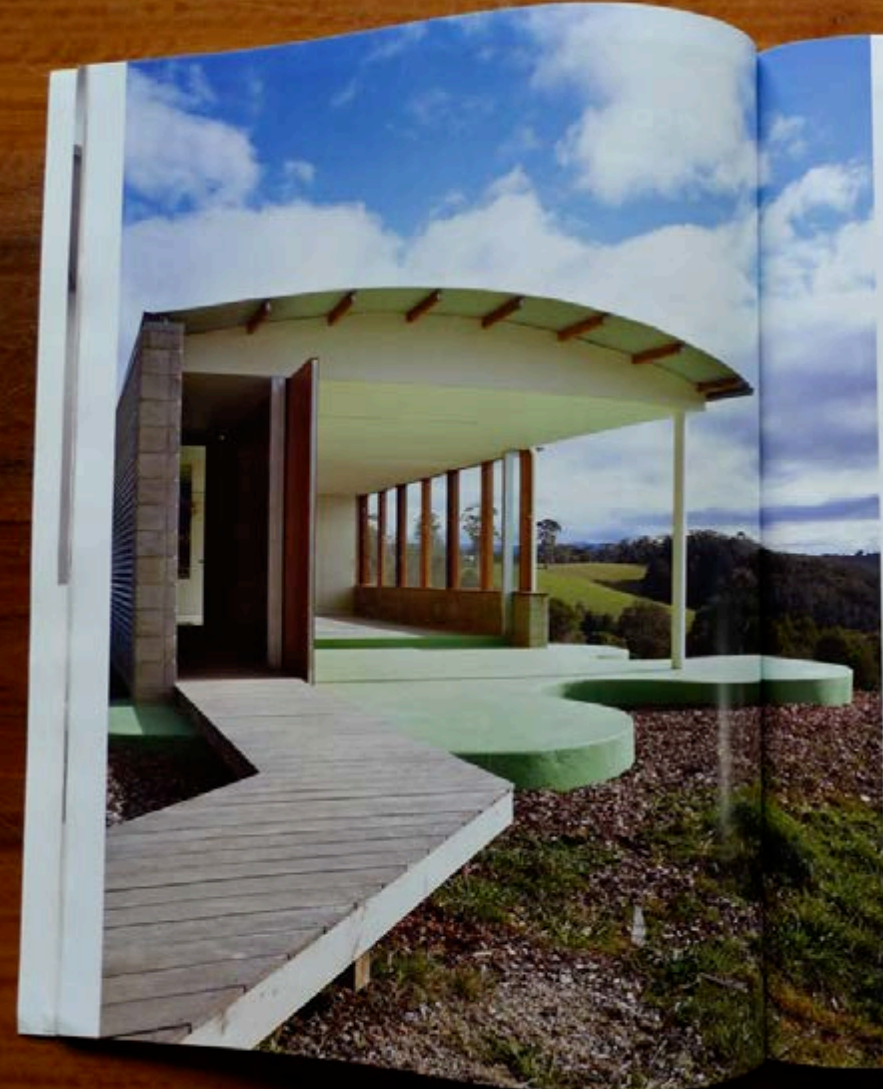


Nature and nurture



A winning DIY green roof

Most would have to put away all cars. This environmental home owner has successfully installed a green roof on her home with Jackie Chan's...
W...
The green roof is a sustainable feature that helps reduce energy consumption and improve air quality. It also provides a natural habitat for birds and insects.



SPARTAN STYLE

In the coldest reaches of Gippsland a modest new home makes the most of its stunning surrounds by using colour, light and simple design principles.

WORDS: JYOLA NEZON
PHOTOGRAPHY: WILSON/SKATTE