

TREE SCHEDULE						
CODE	BOTANICAL NAME	COMMON NAME	HEIGHT	SPREAD	POT SIZE	QTY
LARGE EVERGREEN TREES						
Em	<i>Eucalyptus melliodora</i>	Yellow Box	25.0	10.0	TUBESTOCK	1
Ep	<i>Eucalyptus polyanthemus</i>	Red Box	20.0	6.0	TUBESTOCK	2
Er	<i>Eucalyptus rubida</i>	Candlebark	20.0	12.0	TUBESTOCK	6
Ev	<i>Eucalyptus viminalis</i>	Manna Gum	20.0	15.0	TUBESTOCK	2
MEDIUM EVERGREEN TREES						
Ec	<i>Eucalyptus cephalocarpa</i>	Silver-leaved Stringybark	15.0	12.0	TUBESTOCK	7
SMALL EVERGREEN TREES						
Al	<i>Acacia implexa</i>	Lightwood	8.0	5.0	200MM	40
Ei	<i>Eucalyptus leucoxylon</i> 'Eukie Dwarf'	Yellow Gum Eukie Dwarf	6.0	5.0	200MM	25

LEGEND

- EXISTING TREE TO BE RETAINED
- PROPOSED INDIGENOUS EVERGREEN TREES
- GARDEN BED
- 2:1:3 TERRESTRIAL GARDEN BED WITH JUTE MATTING
- REINFORCED GRASS MAINTENANCE ACCESS TRACK
- GRASS NATURE STRIP
- AREA OF CULTURAL SIGNIFICANCE
- EXPOSED AGGREGATE FOOTPATH
- EXISTING MULLUM CREEK LINEAR SHARED TRAIL
- MULLUM CREEK
- 100 YEAR FLOOD LINE
- VEHICLE EXCLUSION BOLLARDS
- COUNCIL APPROVED REMOVABLE STEEL BOLLARD WITH MELBOURNE WATER, COUNCIL OR CFA LOCK AS REQUIRED
- FEATURE LOGS
- FEATURE BOULDERS
- FEATURE MOUNDING
- LIGHT POLES
- TELEPHONE
- ELECTRICAL
- WATER
- CAS
- SEWER
- DRAINAGE PIT
- STORM WATER SYSTEM
- AQUATIC SAFETY SIGNS
- COUNCIL SIGN
- NATURE STRIP EARTH WORKS
- OMP SIGN

FEATURE LOG NOTE:

ALL FEATURE LOGS ARE TO BE CLASS 1 OR 2 AUSTRALIAN HARDWOOD TREES SOURCED FROM TREES CLARIFIED AND STOCKPILED ON SITE OR OTHERWISE SOURCED SUSTAINABLY. REFER TO SPECIFICATION. SETOUT IS TO BE APPROVED BY THE SUPERINTENDENT.

ROCKWORK NOTE:

LANDSCAPE CONTRACTOR, REFER SCHEDULE & SPECIFICATION

FEATURE BOULDER NOTE:

FEATURE BOULDERS ARE TO BE COLDESTREAM ROCK, HEAVY DARK BLUE TONES TO BE AVOIDED. REFER TO SPECIFICATION FOR SIZING. ROCK ON VERGES NEEDS TO BE SETBACK AT LEAST 1M FROM BACK OF KERB SETOUT TO BE APPROVED BY THE SUPERINTENDENT.

HABITAT NOTE:

FEATURE BOULDERS AND LOGS ARE TO BE SETOUT TO PROVIDE HABITAT OPPORTUNITIES FOR INDIGENOUS FAUNA. REFER TO SPECIFICATION. SET OUT OF THESE ELEMENTS ARE TO BE APPROVED BY THE SUPERINTENDENT.

PLANT PROCUREMENT NOTE:

ALL INDIGENOUS PLANTS MUST BE OF LOCAL PROVENANCE AND PREFERABLY SOURCED FROM A LOCAL INDIGENOUS NURSERY ALLOW FOR SUFFICIENT LEAD TIMES TO SOURCE & PROPAGATE PRIOR TO PLANTING.

EXISTING VEGETATION NOTE:

EXISTING VEGETATION NOT MARKED FOR REMOVAL, IS TO BE RETAINED AND PROTECTED.

SETOUT NOTE:

ALL SETOUT TO BE APPROVED BY THE SUPERINTENDENT PRIOR TO CONSTRUCTION, ANY WORKS WITHIN TREE PROTECTION ZONES ARE TO BE SUPERVISED BY A QUALIFIED ARBORIST (WHERE APPLICABLE).

DRAWING ACCURACY NOTE:

THIS DRAWING HAS BEEN PREPARED UPON CIVIL ENGINEERING PLANS WHICH MAY HAVE BEEN SUPERSEDED. THE CONTRACTOR IS ADVISED TO CONSULT WITH OTHER TRADES AND THE CONSTRUCTION MANAGER SHOULD ANY DISCREPANCIES BECOME APPARENT PRIOR TO & DURING CONSTRUCTION.

SERVICES NOTE:

LOCATION OF ALL SERVICES TO BE CONFIRMED ON SITE PRIOR TO COMMENCEMENT OF WORKS. REFER CIVIL ENGINEERING DRAWINGS FOR SERVICES DETAILS.

JUTE MAT NOTE:

JUTE MAT TO BE INSTALLED TO ALL EPHEMERAL, WETLAND MARGINS & NOMINATED TERRESTRIAL GARDEN BEDS.

TREE SETOUT NOTES:

SETOUT OF ALL TREES IS TO BE APPROVED BY THE SUPERINTENDENT PRIOR TO INSTALLATION

TREE OFFSET NOTES:

1. PITS: MINIMUM 1.5M OFFSET
2. PATH: MINIMUM 1.5M OFFSET
3. DRIVEWAYS: MINIMUM 2.0M OFFSET
4. LIGHT POLES: MINIMUM 3.0M OFFSET
5. TREE TO TREE: MINIMUM 3.0M OFFSET

CIVIL ENGINEERING NOTES:

THIS DRAWING IS TO BE READ IN CONJUNCTION WITH THE CIVIL ENGINEERING DOCUMENTATION FOR THIS SITE PREPARED BY LANDPLAN GROUP PTY LTD. CIVIL ENGINEERING DRAWINGS TAKE PRECEDENCE OVER LANDSCAPE DRAWINGS

BIRD PROTECTION NOTE:

BIRD PROTECTION NETTING IS TO BE PROVIDED TO THE SHALLOW AND DEEP MARSH ZONES AS REQUIRED AND LEFT IN PLACE UNTIL PLANTS ARE SUITABLE ESTABLISHED. REFER SPECIFICATION

FOR CONSTRUCTION

C11

09-03-2017

CONSTRUCTION ISSUE

T1

29-08-2016

ENDORSE

T2

11-08-2016

CONSTRUCTION ISSUE

T3

03-04-2017

ENDORSE

DATE

DATE

DESCRIPTION

MATHEWS PROPERTY DONVALE

MULLUM CREEK ESTATE - DONVALE

STAGE 1 TREE SETOUT & KEY PLAN

0 2.5 5 10 20m

Scale: 1:500 @ B1 size

CDA Design Group Pty Ltd

Landscaping Architecture

Urban Design

180 Victoria Street

Carlton Victoria 3063

T 03 9449 9464

F 03 9449 9477

E info@cdaesigngroup.com.au

Project No: 14074

Date: 09/03/2014

Drawn by: MH

Checked: TV

Drawing No: L01_C1

CD

DA

CS

GP

PT

LD

AC

LOG SCHEDULE

DESCRIPTION	QTY
PREMIUM LOGS	10
PREMIUM LOGS FOR FURNITURE	2
SECONDARY LOGS	40

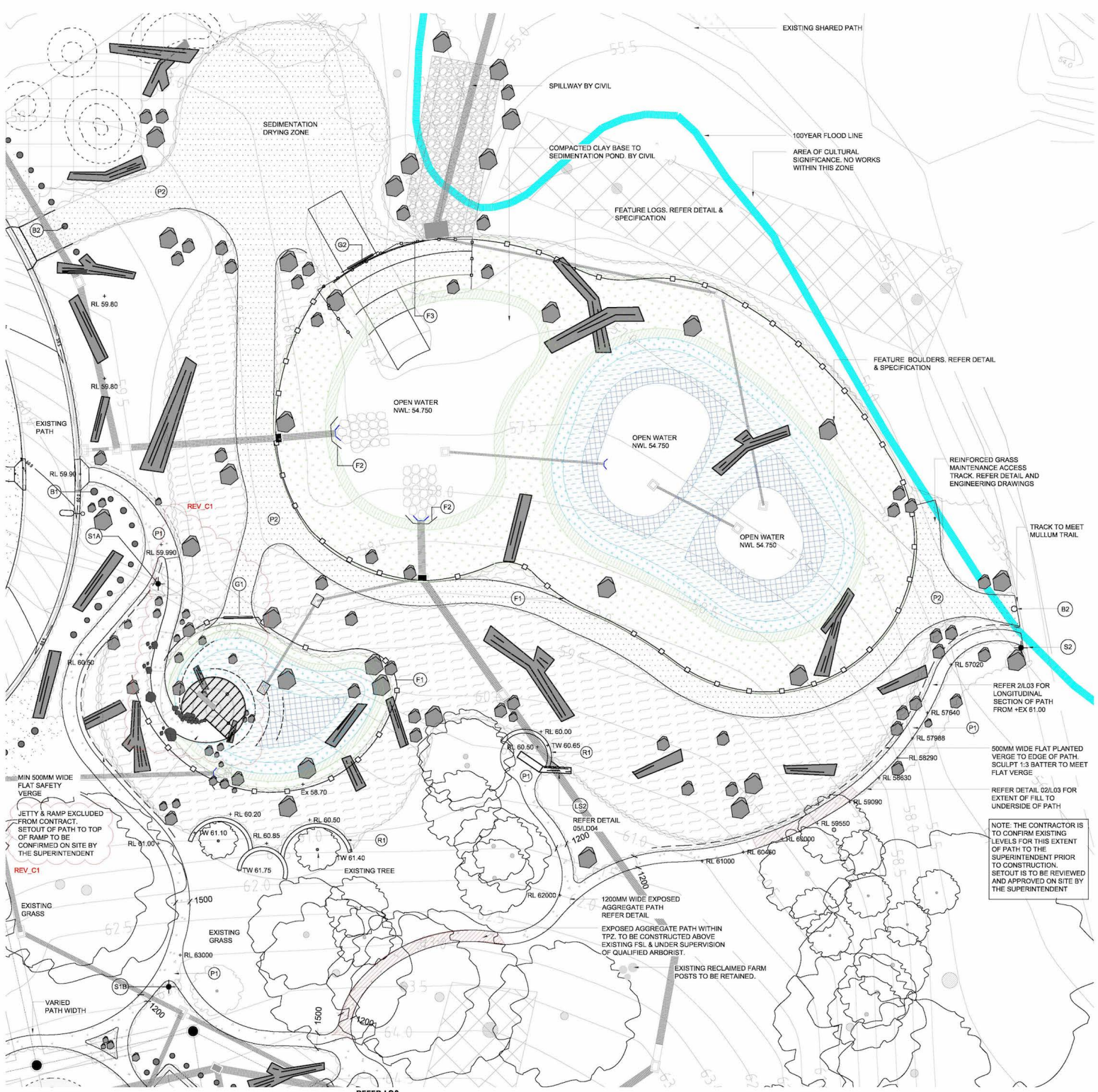
ALL LOGS NOT TAGGED AS PREMIUM OR FOR FURNITURE ARE CONSIDERED SECONDARY LOGS. REFER SPECIFICATION

BOULDER SCHEDULE

DESCRIPTION	QTY
LARGE BOULDER 900MM +	123
MEDIUM BOULDER 600MM - 900MM	50
SMALL BOULDER 400MM - 600MM	48

AREAS DISTURBED BY WORKS:

REINSTATE ALL AREAS DISTURBED BY WORKS TO THE SATISFACTION OF THE RESPONSIBLE AUTHORITY



LEGEND

- EXISTING TREE TO BE RETAINED
REFER ARBORICULTURAL ASSESSMENT
REPORT DATED JUNE 2014 PREPARED BY
STEPHEN FITZGERALD
- WETLAND MARGIN PLANTING
200MM ABOVE NWL+
- EPHEMERAL BATTER PLANTING
NWL TO +200MM ABOVE NWL
INCLUDES JUTE MATTING
- SHALLOW MARSH PLANTING
NWL TO -150MM BELOW NWL
- DEEP MARSH PLANTING
-150MM TO -350MM BELOW NWL
- SUBMERGED MARSH PLANTING
-350MM TO -700MM BELOW NWL
- ≥ 1:3 WETLAND TERRESTRIAL
GARDEN BED
REFER SPECIFICATION & PLANT SCHEDULE
- GARDEN BED
REFER SPECIFICATION
- AREA OF CULTURAL SIGNIFICANCE
REFER TO CHMP
- EXPOSED AGGREGATE CONCRETE
FOOTPATH. EXTENT OF EXISTING TO BE
CONFIRMED ON SITE BY CONTRACTOR
- EXISTING MULLUM CREEK LINEAR
SHARED TRAIL
- 100 YEAR FLOOD LINE
- VEHICLE EXCLUSION BOLLARDS
REFER DETAIL AND SPECIFICATION
- FEATURE LOGS
REFER SPECIFICATION & DETAIL
- FEATURE BOULDERS
REFER SPECIFICATION & DETAIL
- FEATURE MOUNDING
REFER SPECIFICATION
- GATE TYPE 1. REMOVABLE PANEL TO
TEMPORARY FENCE. Refer Specification
- GATE TYPE 2. MODIFIED MELBOURNE
WATER ACCESS GATE. Refer Detail &
Specification
- REMOVABLE BOLLARD WITH MELBOURNE
WATER COUNCIL OR CFA LOCK AS
REQUIRED. Refer Specification
- SIGN TYPE 1A - AQUATIC SAFETY SIGN
MOUNTING TYPE A
Refer Detail & Specification
- SIGN TYPE 1B - AQUATIC SAFETY SIGN &
MOUNTING TYPE B
Refer Detail & Specification
- SIGN TYPE 2 - COUNCIL SIGN
BY COUNCIL
- TOP OF WALL LEVEL
- RELATIVE LEVEL
- ROCK BEACHING BY CIVIL
REFER TO CIVIL ENGINEERS DRAWINGS
- FENCE TYPE 1
TEMPORARY SAFETY & RABBIT PROOF
FENCE. Refer Detail & Specification
- FENCE TYPE 2
CULVERT WING WALL SAFETY FENCE
Refer Detail & Specification
- FENCE TYPE 3
PERMANENT SAFETY FENCE
Refer Detail & Specification
- RETAINING WALL TYPE 1
STONE CLAD BLOCK WORK RETAINING
WALL. Refer Detail & Specification
- SAFETY BENCH TO FROG POND
Refer Specification

SURFACE FINISHES SCHEDULE

- P1 EXPOSED AGGREGATE CONCRETE
FOOTPATH. REFER DETAIL & SPECIFICATION
- P2 REINFORCED GRASS MAINTENANCE ACCESS
TRACK. REFER DETAIL & SPECIFICATION

GENERAL NOTE:
REFER TO L01 FOR NOTES APPLICABLE TO ALL DRAWINGS IN
THE DOCUMENTATION SET

WETLAND PLANT SCHEDULES
NOTE:
REFER TO L01 FOR WETLAND PLANT SCHEDULES,
QUANTITIES & DENSITIES

ROCK & LOG SETOUT NOTE:
NO LOGS OR ROCKS ARE TO TRANSITION BETWEEN THE
BOUNDARIES OF THE DEEP AND SHALLOW MARSH ZONES.
SETOUT TO BE APPROVED

FOR CONSTRUCTION

C1	09.01.2017	CONSTRUCTION ISSUE
T1	29.08.2016	ENDER ISSUE
-	11.08.2016	COUNCIL ISSUE
Rev	Date	Description

MATHEWS PROPERTY DONVALE

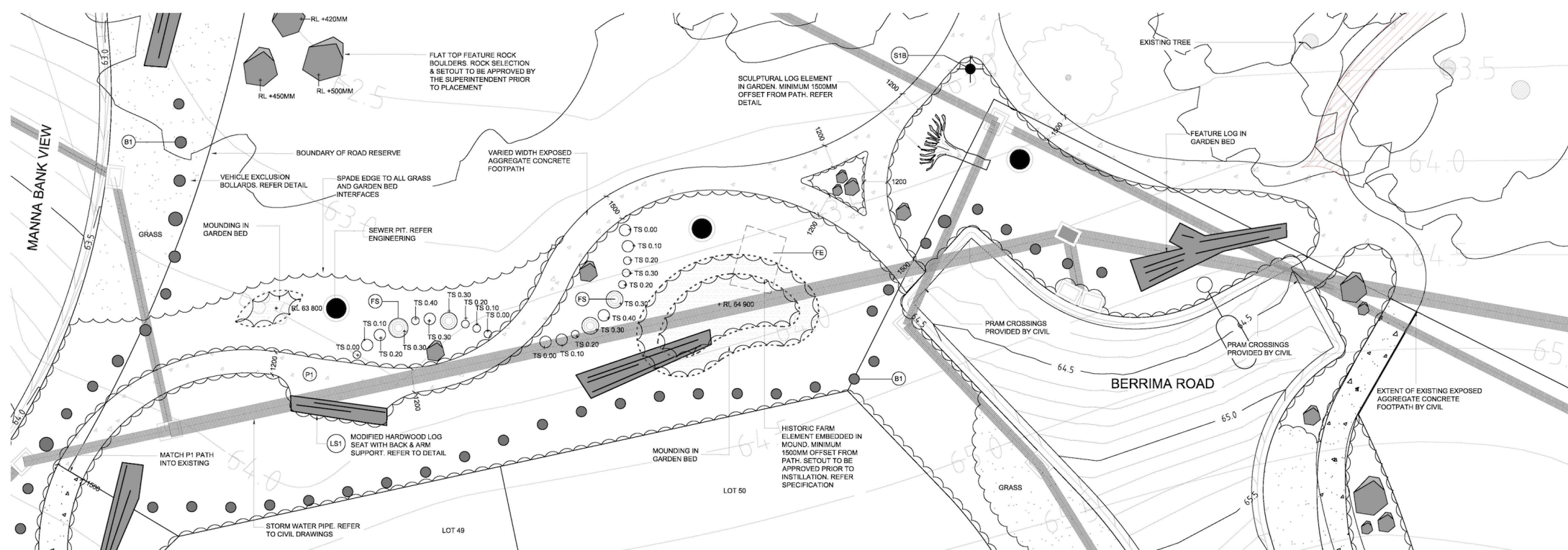
MULLUM CREEK ESTATE - DONVALE

STAGE 1 WETLAND

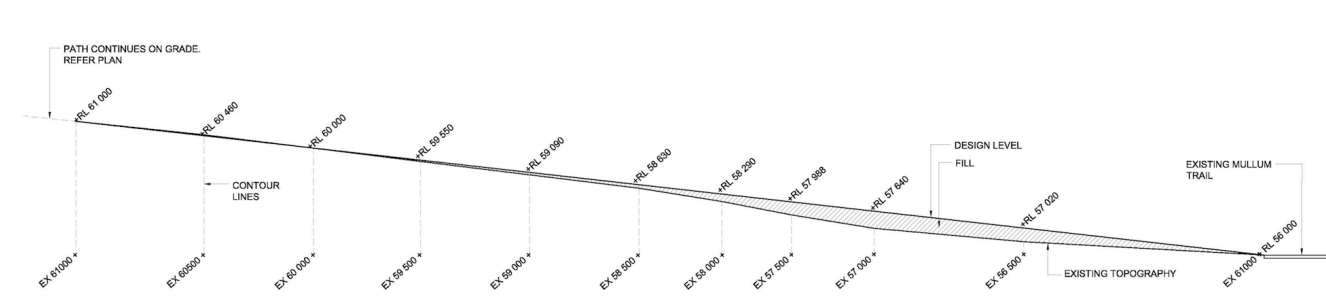


CDA Design Group Pty Ltd
Landscape Architecture
Urban Design
185 Forsyth Street
Carlton Victoria 3053
T 03 9349 5866
F 03 9349 5877
E office@cddesigngroup.com.au

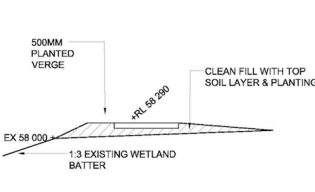
Project No. 14014
Date 07/07/2014
Drawn by MH
Checked by TV
Drawing No. L02_C1



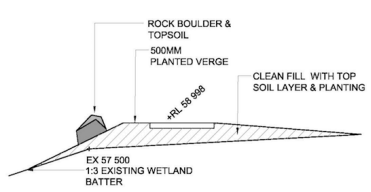
01 - RESERVE PART PLAN
Scale 1:50 @ A1



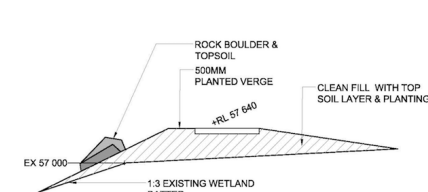
02 - PATH ALONG WETLAND BATTER EDGE - UNROLLED LONGITUDINAL SECTION
Scale 1:100 @ A1



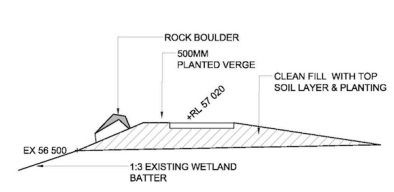
02 - PATH SECTION +EX 58.00
Scale 1:50 @ A1



02 - PATH SECTION +EX 57.50
Scale 1:50 @ A1



02 - PATH SECTION +EX 57.00
Scale 1:50 @ A1



02 - PATH SECTION +EX 56.50
Scale 1:50 @ A1

LEGEND

- EXISTING TREE TO BE RETAINED
REFER ARBORECENTRAL ASSESSMENT
REPORT DATED JUNE 2014 PREPARED BY
STEPHEN FITZGERALD
- GARDEN BED
75mm organic mulch
150mm topsoil
300mm cultivated sub grade
- GRASS NATURE STRIP
REFER SPECIFICATION
- EXISTING EXPOSED AGGREGATE
FOOTPATH
THE CONTRACTOR IS TO CONFIRM EXTENT
ON SITE
- FEATURE LOGS
REFER SPECIFICATION & DETAIL
- FEATURE BOULDERS
REFER SPECIFICATION & DETAIL
- FEATURE MOUNDING
REFER SPECIFICATION & DETAIL
- FEATURE STUMPS
REFER SPECIFICATION & DETAIL
- SPADE EDGE TO ALL GARDEN AND
GRASS INTERFACES

- VEHICLE EXCLUSION BOLLARDS
RECLAIMED HARDWOOD STUMPS
REFER DETAIL AND SPECIFICATION
- SIGN TYPE 1 - AQUATIC SAFETY SIGN
Refer Detail & Specification
- SPADE EDGE TO ALL GARDEN AND
GRASS INTERFACES
- LIGHT POLES
REFER ENGINEERING
- TELEPHONE
REFER ENGINEERING
- ELECTRICAL
REFER ENGINEERING
- WATER
REFER ENGINEERING
- GAS
REFER ENGINEERING
- SEWER
REFER ENGINEERING
- DRAINAGE PIT
REFER ENGINEERING
- STORM WATER SYSTEM
REFER ENGINEERING
- TOP OF STUMP FINISHED LEVEL
ABOVE ADJACENT GROUND (mm)
- SALVAGED HISTORIC FARM
ELEMENT EMBEDDED IN
LANDSCAPE. REFER SPECIFICATION
- FINISHED DESIGN LEVEL

SURFACE FINISHES SCHEDULE

- EXPOSED AGGREGATE CONCRETE
FOOTPATH
REFER DETAIL & SPECIFICATION

GENERAL NOTE:
REFER TO L01 FOR NOTES APPLICABLE TO ALL
DRAWINGS IN THE DOCUMENTATION SET

FOR CONSTRUCTION

C1	09.01.2017	CONSTRUCTION ISSUE
T1	29.08.2016	ENDER ISSUE
-	11.08.2016	COUNCIL ISSUE
Rev	Date	Description

MATHEWS PROPERTY DONVALE

MULLUM CREEK ESTATE - DONVALE

MANNA BANK VIEW ROUNDABOUT & RESERVE PATH NETWORK



CDA Design Group Pty Ltd
Landscape Architecture
Urban Design
185 Faraday Street
Carlton Victoria 3053
T 03 9549 8866
F 03 9549 8877
E office@cddesigngroup.com.au

Project No. 14014
Date: 07/07/2014
Drawn by: MH
Checked by: TV
Drawing No. L03_C1

CDA

